

# Dunedin Commons Shops

**PRIMERICA**  
GROUP ONE, INC.

## New Retail Space For Lease

*In The Desirable City of Dunedin, FL*



- ◆ Located at the **intersection of Patricia Avenue & Scotsdale Street** at the entry to the newly developed Dunedin Commons Apartments in Dunedin, FL
- ◆ Full Access is via Patricia Ave & Dunedin Commons Place and via west bound Scotsdale Street with ample parking provided in a **dedicated parking** lot adjacent to the building.
- ◆ **1,333 to 6,800 sf of space available.**
- ◆ **Dunedin Commons Shops** are part of a **mixed use infill development** that includes 336 new multifamily apartments and townhomes. The site is on an established corridor surrounded by existing **densely populated neighborhoods**. The property is within a mile of **Dunedin's** downtown **Main Street** and 1/2 mile from **Dunedin Stadium**, spring home to the Toronto Blue Jays spring training and home to their Dunedin minor league baseball team.

**813.933.0629**



[linkedin.com/PrimericaGroupOneFL](https://www.linkedin.com/company/PrimericaGroupOneFL)  
[facebook.com/  
PrimericaGroupOneFL](https://www.facebook.com/PrimericaGroupOneFL)

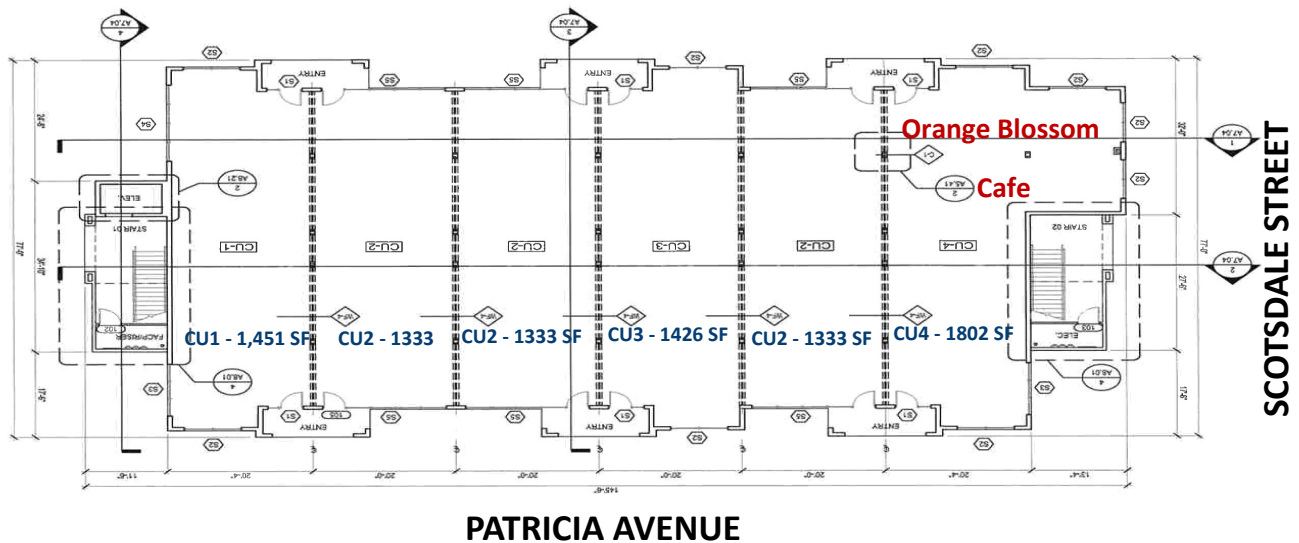
Carol Smiddy, X201

[csmidy@primericagroupone.com](mailto:csmidy@primericagroupone.com)

# Dunedin Commons Shops

Dunedin, FL

**PRIMERICA**  
GROUP ONE, INC.



[linkedin.com/PrimericaGroupOneFL](https://www.linkedin.com/company/PrimericaGroupOneFL)  
[facebook.com/  
PrimericaGroupOneFL](https://www.facebook.com/PrimericaGroupOneFL)



813.933.0629

Carol Smiddy, X201

[csmidy@primericagroupone.com](mailto:csmidy@primericagroupone.com)